

VIBRATORY

Maintenance on the vibratory system is merely a matter of insuring the pump drive belt is tightened and the oil in the exciter units is changed every 500 hours of vibratory operation.

In order to tighten the vibratory pump drive belt first loosen the pump pivot mount bolt. (See Fig100). Loosen the jam nut on the tensioning arm, tighten the tensioning nut to adequate belt tension, and lock the tensioning nut with the jam nut. (See Fig101). Retighten the pump base pivot bolt. To change the exciter oil first remove the vibratory motor-exciter cover. (See Fig102). Remove the drain plug in each exciter and allow the oil to drain on to the pilot roll. The drain plug is located on the bottom side of the exciters, shown in Fig103. Remove the fill plug and fill each exciter with one tube (8 ounces) of **Ground Pounder Formula 1 Exciter Oil**.

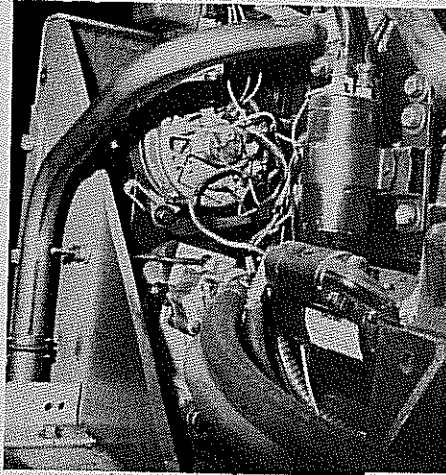
CAUTION:

Use no substitutes for the **ground pounder formula 1 exciter oil** and do not over-fill the exciters. This will damage the units and will void the warranty on the machine.

VIBRATORY MOTORS REMOVE AND REPLACE

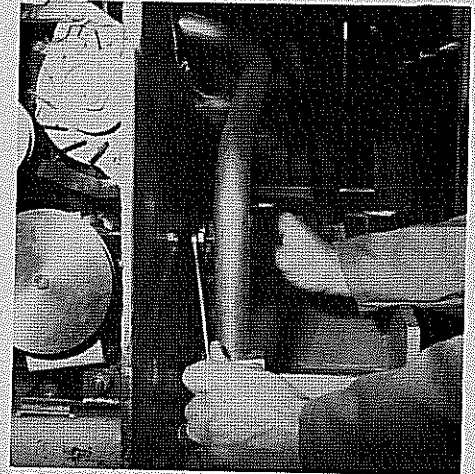
1. Remove the motor-exciter cover at the front of the pilot roll.
2. Remove and plug the hoses from the vibratory motors. (See Fig.).
3. Remove the fasteners that hold the motors to the mount bracket.
4. Pull the motors from the mount bracket taking care not to lose the rubber "star" from the drive coupling
5. Remove the coupling and fittings from the motor. New motors are available from dealers or from the factory on an exchange basis.
6. Reverse the procedure for assembly.

Fig. 100



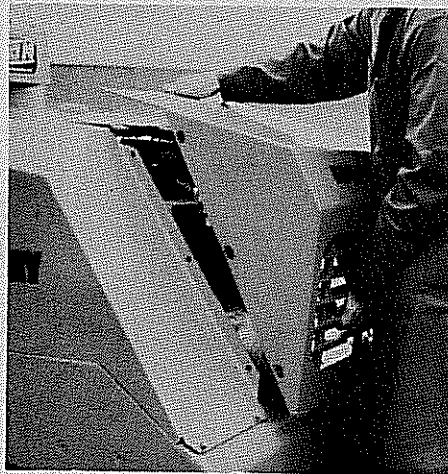
PIVOT MOUNT BOLT

Fig. 101



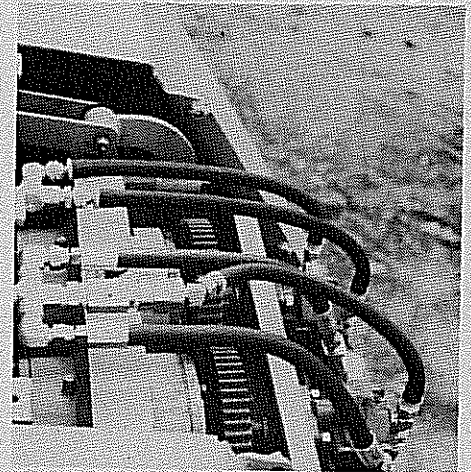
ADJUST BELT TENSION

Fig. 102



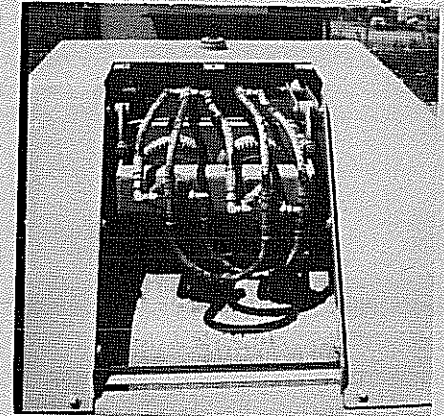
REMOVE MOTOR EXCITER COVER

Fig. 103



EXCITER FILL

Fig. 104



VIBRATORY

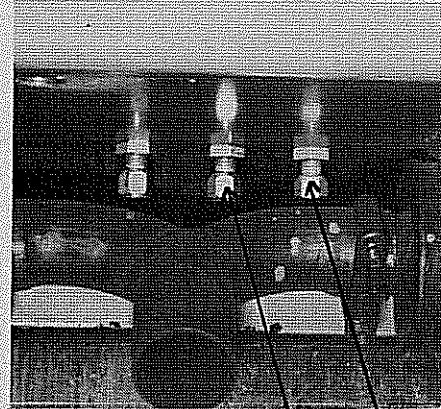
VIBRATORY PUMP REMOVE AND REPLACE

1. Drain the radiator and the hydraulic reservoir (See Fig. 105)
2. Remove the engine access cover.
3. Remove the rear grill and the radiator top retainer.
4. Remove the radiator hoses from the engine and the radiator base mount nuts. (See Fig. 106)
5. Remove the radiator base spacers, tilt the radiator back and remove the drain hose. Remove the radiator from the machine. Loosen the pump base pivot bolt. (See Fig. 106).
6. Remove the tension arm and the drive belt. (See Fig. 107).
7. Remove the suction and pressure hoses at the pump. (See Fig. 108)
8. Remove the pump base pivot bolt and remove the pump from the machine.
9. Loosen the two set screws in the pump sheave and remove the sheave.
10. Remove the four fasteners holding the pump to the mount and separate the two. Remove the fittings from the pump.
11. New pumps are available from your dealer or from the factory on an exchange basis.
12. Reverse the procedure for assembly.

NOTE:

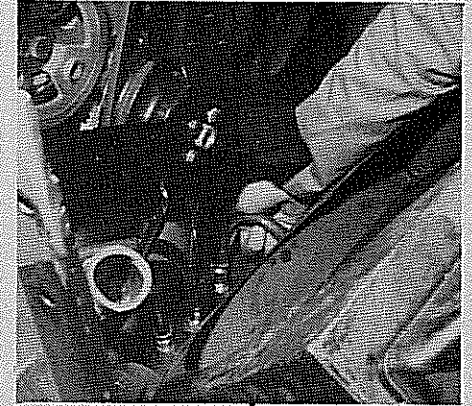
Insure the pump drive belt is properly aligned prior to replacing the radiator. Insure the radiator shroud is properly aligned with respect to the fan.

Fig. 105



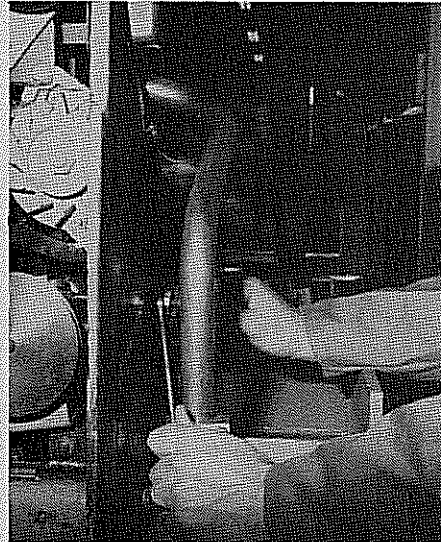
HYDRAULIC RESERVOIR & RADIATOR DRAIN PLUG

Fig. 106



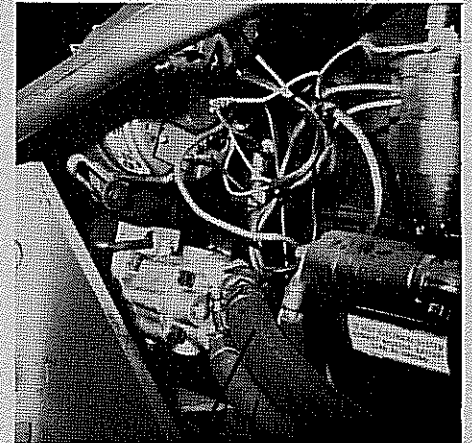
REMOVE DRAIN HOSE

Fig. 107



REMOVE TENSION ARM

Fig. 108



SUCTION HOSE / PRESSURE HOSE