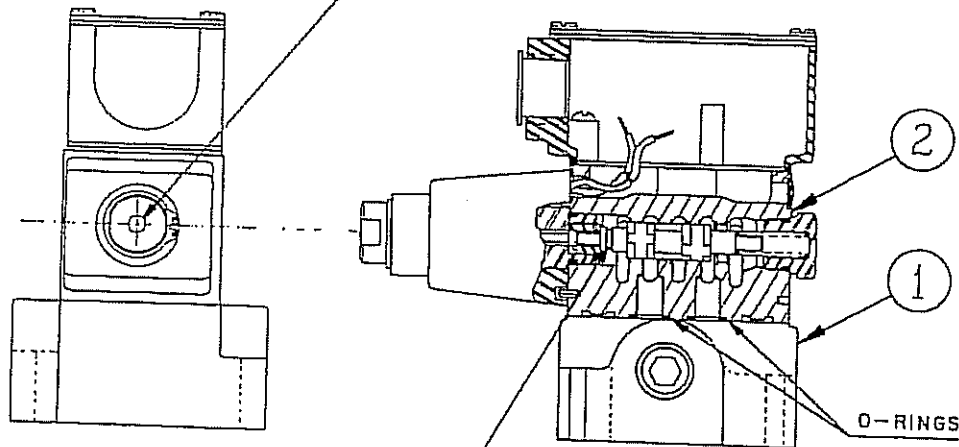


NOTE:
PUSH PIN MANUAL OVERRIDE
OF SOLENOID



IDENTIFICATION GROOVE FOR
CORRECT ASSEMBLY OF SPOOL

SPECIAL INSTRUCTIONS

1. TORQUE REQUIREMENT BETWEEN VALVE AND SUBPLATE 45-50 IN. LBS.
2. WHEN ASSEMBLING VALVE TO SUBPLATE OR MANIFOLD—TIGHTEN ALL FASTENERS EQUALLY BEFORE APPLYING FINAL TORQUE TO VALVE.
3. VALVE IS EQUIPPED WITH A MANUAL OVERRIDE PUSH PIN (SEE NOTE). THIS ALLOWS THE VALVE TO BE SHIFTED MANUALLY IF THERE IS A MALFUNCTION IN THE SOLENOID.
4. CARE SHOULD BE TAKEN WHEN REMOVING VALVE OR DURING ASSEMBLY. THERE ARE (4) O-RINGS BETWEEN VALVE AND SUBPLATE AND BETWEEN VALVE AND MANIFOLD.

2	550-543	VALVE SOLENOID DOIW-BBC-A-12VDC	1
1	550-490	VALVE SUBPLATE	1
LAYTON MANUFACTURING COMPANY SALEM, OREGON			
TITLE: SINGLE SOLENOID VALVE ASSEMBLY			
DESIGNED BY <i>[Signature]</i>	CHECKED BY	SCALE NONE	DATE 9-12-78
APPROVED BY PAVER	D-550	DATE	REV C-286

140097

REF. NO.	PART NO.	DESCRIPTION	NO. REQ.	REF. NO.	PART NO.	DESCRIPTION	NO. REQ.