

## B. RECEIVING THE MACHINE

Your Layton Track Paver was completely inspected, tested, lubricated and filled with hydraulic fluid before leaving the factory. If any parts are missing, please check with your dealer.

In the hopper are the right and left hook up arms and a carton containing:

1. 3 tail gate hooks.
2. 2 short chains.
3. 2 handles.
4. A box of misc. bolts and nuts for assembly.
5. Your manufacturers Warranty.
6. Hydraulic pump handle.

Prior to assembling the machine, your dealer would appreciate your notifying him of its arrival to enable him to assist you in your assembly and first operation of this machine.

**Note:** Arms are right and left. To determine, lay arm in position in front of machine. (See Figure B-2) Chain should be up.

Insert pin and hair pin — Repeat process for assembly of other arm.

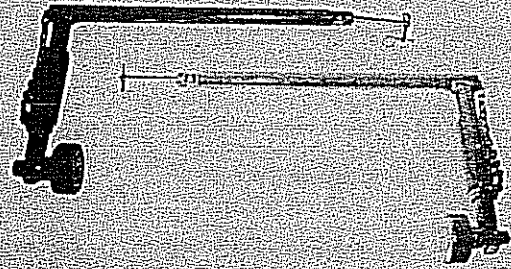


Fig. B-2

## ASSEMBLY

### 1. Hitch Arms.

Using the hydraulic pump, close the number one (1) valve from the left on the pump assembly. Pump three or four strokes until the actuating levers on the undercarriage have moved well inside the hook-up arm tube. Remove hair pin and pin from hook-up arm and insert arms in tube until the hole in the linkage is lined up with the hole in the actuating lever.

(See Figure B-1)

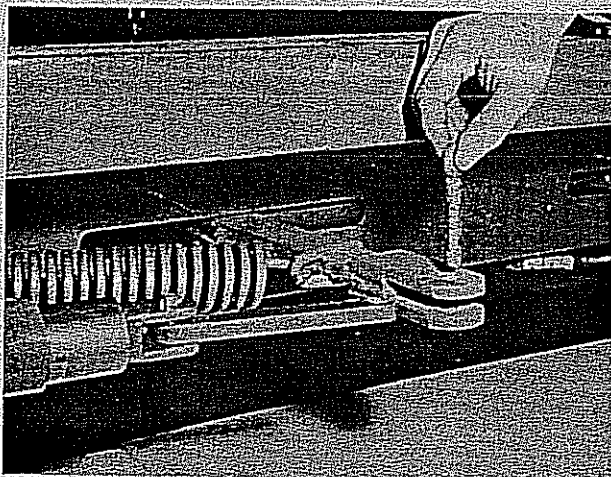


Fig. B-1

### 2. Handles.

The handles that have the brass plate marked "UP" are for the depth control. Align over the screws and insert bolts.

### 3. Tailgate Stop.

Insert end of rod in "V" provided in back of hopper — line up holes on the top of the Hopper back with those on tailgate stop flange, insert bolts and tighten.

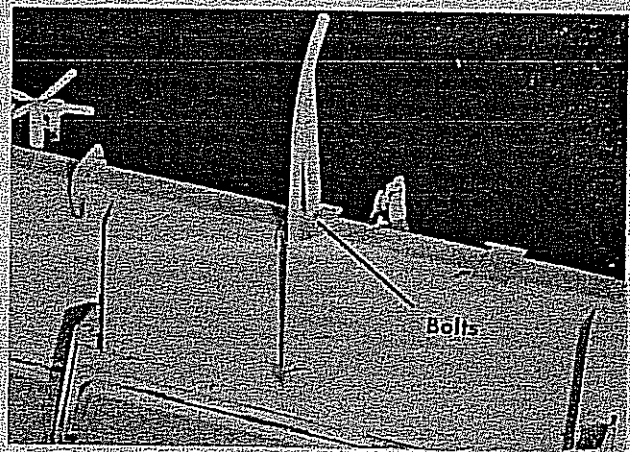


Fig. B-3