

LAYTON

MODEL 400

QUICK - HITCH

Parts

Service

Installation

LAYTON MANUFACTURING CO.

Salem, Oregon

PARTS AND SERVICE INSTRUCTIONS

Your Layton Quick Hitch has been designed and built for efficient and economical operation. It will serve you well if you operate and maintain it properly. This manual will assist you in the proper maintenance, operation, and parts ordering.

THIS MANUAL HAS BEEN PREPARED FOR
QUICK HITCH , SERIAL NUMBER _____

FINISHER MAKE AND MODEL NUMBER _____

PARTS INFORMATION

HOW TO ORDER PARTS

To insure accuracy and promptness in filling your order, the following information **MUST** be given:

1. Name and address of person or company to whom the invoice is to be sent.
2. Name, address and phone number where parts are to be shipped.
3. Shipping instructions (UPS, Truck, Air etc.)
4. Are transportation charges to be prepaid or collect.
5. Your order number.
6. Model number of the machine.
7. Serial number of the machine.
8. Quantity of Part(s) required.
9. Part number(s) needed.
10. Description of part(s)

BUYING PARTS NOT MANUFACTURED BY LAYTON MANUFACTURING COMPANY.

There are many items purchased by Layton Mfg. Co., from various suppliers that look like standard items, but are manufactured to special tolerances, or are special alloys, or have been specially heat treated. consequently, serious problems can arise when these facts are not realized and such parts are substituted unknowingly. We realize that in many cases it may be more convenient for you to buy stock supplier items direct, rather than through Layton Mfg. Co. We have identified such items in our Parts List. However in the event of unsatisfactory performance resulting from the use of supplier items not so identified, Layton Mfg. Co. **CAN NOT** be responsible.

RECEIPT OF PARTS

Responsibility for breakage, loss or damaged goods, ceases upon delivery of the merchandise to the transportation company from whom a receipt is received showing that the shipment was received in good condition. If any material is short and/or damaged, a notation should be on the carrier's agent bill.

PARTS TO BE RETURNED

Permission to return parts or equipment **MUST** be received before making shipment. When requesting permission, itemize the parts and quantities to be returned and show the **INVOICE NUMBER AND DATE** of original purchase. Transportation charges **MUST** be **PREPAID**.

MAIN BEAM SERVICE INSTRUCTIONS

If the main beam halves have to be disassembled to service the hydraulic cylinder, or arms inside, caution should be taken during re-assembly. The internal star washers, Part Number 400-117, should be replaced. Part Number 400-118 should be assembled from the center out to the ends, and torqued to 40 Ft. - lbs.

LUBRICATION

- A. Do not use a power operated grease gun on the anti-friction bearings.
- B. Grease the top and bottom of the center clevis (Part Number 400-142) daily.
- C. Grease the rim rolls, both left and right side, (Part Number 400-280) daily.

HYDRAULIC CYLINDERS

If the hydraulic cylinders (slide-arm or hook-up arms cylinder) must be serviced, such as replacement of packing, we recommend purchasing a complete seal kit to service the cylinders.

MANUFACTURER'S WARRANTY

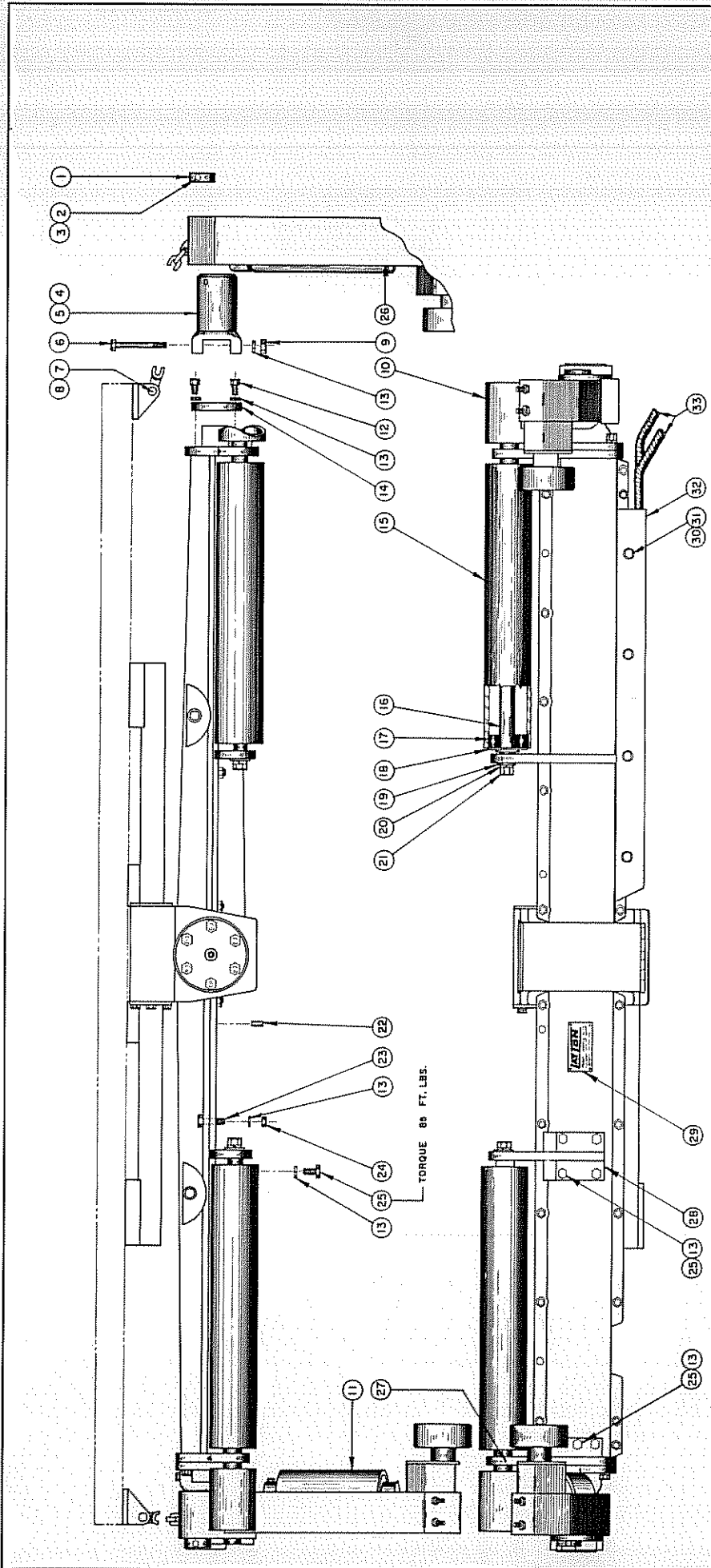
Manufacturer warrants its products to its dealer, and dealer is to extend the same warranty to its customers, as follows:

All products sold hereunder are warranted by the Company against defects in material or workmanship for twelve (12) months from the date delivery thereof to the customer. The liability of the Company being expressly limited to repairing or replacing (at the Company's option) all defective machine parts, accessories, or sub-assemblies, as shall be returned to the Company at Salem, Oregon, or other such point designated by the Company, freight prepaid, within a reasonable time. No other warranty or guarantee, express or implied, is authorized or shall apply to the same

LAYTON MANUFACTURING COMPANY
4725 TURNER ROAD S. E.
SALEM, OREGON, 97301

QUICK-HITCH
PARTS

LAYTON MANUFACTURING CO.
SALEM, OREGON



10	400-107	PUSH ROLL - SHORT W/D BEARINGS	2
9	400-73.9	HEX NUT 1/4-20 WF	4
8	400-13.4	COTTER PIN 1/8 DIA. X 1 1/2 LG.	2
7	400-13.3	CLEVIS PIN 1/8 DIA. X 1 1/4 LG.	2
6	400-13.2	STUD BUSHING 1/8 DIA. X 2 LG.-GR. 8	4
5	400-13.5	STUD BUSHING 1/8 DIA. X 2 LG.-GR. 8	4
4	400-13.6	STUD BUSHING 1/8 DIA. X 2 LG.-GR. 8	4
3	400-13.0	HEX HD. CPW. 1/4-18 X 5 1/2 LG. - N.T.	2
2	500-012	HEX NUT 3/8-16 NC	2
1	400-13.1	STOP RING	2
REP. NO.	REP. NO.	REVISION	REP. NO.
LAYTON MANUFACTURING COMPANY SALIM, OHIO			
QUICK-HITCH BEAM ASSY.			
130509			
REV. B-85			
D-1128			

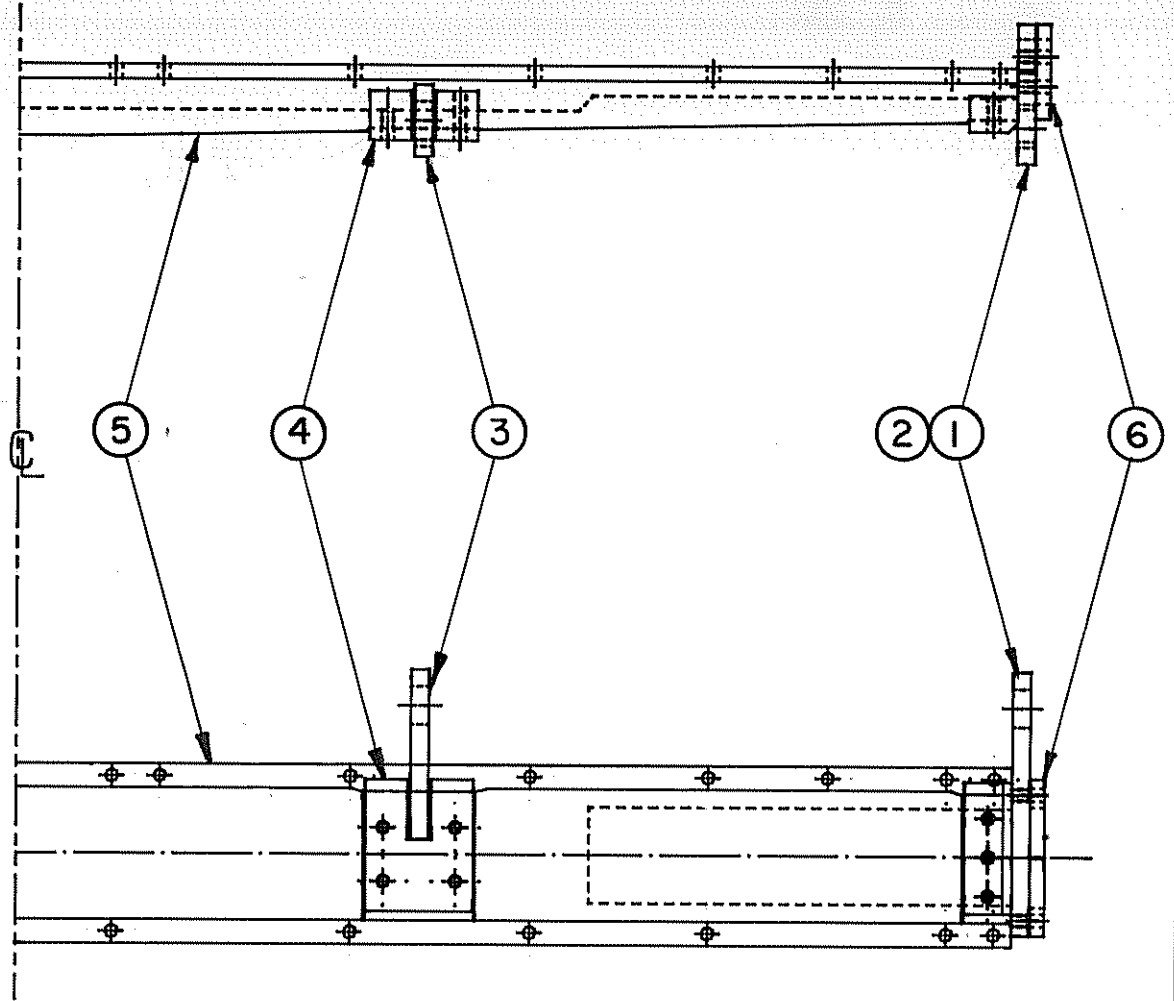
33	400-10.8	HOSE GUARD	2
32	500-20.5	LOCK WASHER 3/8-16 X 3/4 LG.	6
31	500-05.6	LOCK WASHER 3/8	2
30	500-32.5	SERIAL NO. PLATE	2
29	400-770	PUSH ROLL MOUNT BRACKET, INNER	1
28	400-771	PUSH ROLL MOUNT BRACKET, OUTER	1
27	400-11.5	FIXED HOOK-UP ARM (LEFT) COMPLETE	1
26	400-7.67	HEX HD. CPW. 1/2-20 X 1 1/4 LG., GRADE 8	7
25	500-08.0	HEX NUT 1/2-13 NC	24
24	500-18.8	HEX HD. CPW. 1/2-13 X 2 LG., GRADE 8	24
23	400-11.9	DOMEL PIN	4
22	400-28.8	HEX HD. CPW. 5/8-11 NC X 1 1/4 LG.	2
21	200-27.5	STD. LOCKWASHER 5/8	2
20	400-11.2	BEARING WASHER	2
19	400-11.1	BEARING	6
18	400-11.0	SHAFT	2
17	400-10.9	PUSH ROLL (LONG) W/O BEARINGS	2
16	400-12.2	END PLATE	2
15	500-05.6	STD. LOCKWASHER 1/2	43
14	500-05.9	HEX HD. CPW. 1/2-13 NC X 1 1/4	6
13	400-11.6	FIXED HOOK-UP ARM (RIGHT) COMPLETE	1

NOTE:
 REF. NO. 27 - PART NO. 400-770 INCLUDES REF. NOS. 13 AND 25.
 REF. NO. 28 - PART NO. 400-771 INCLUDES REF. NOS. 13 AND 25.

NOTE:
 REF. #1, 2, 3, 4, 5, 6, 8 ARE NOT USED AFTER
 S/N 400-50-1894-3. THE NEW SLIDE ARM ASSY.
 WILL INTERCHANGE INTO OLDER BEAMS.
 SEC. PAGE #2A FOR S/N 400-50-1895-3 AND UP.

NOTE:

⚠ REF. NOS. 1, 2, 3, 4, & 6 START AT S/N 400-27-2017-5
FOR PREVIOUS S/N, SEE PAGE 1



6	400-910	SCRAPER (SLIDE ARM)	4
5	400-159	BEAM (SOLD IN PAIRS ONLY)	1
4	400-902	SPACER	2
3	400-901	PUSH ROLL BRACKET, INNER	2
2	400-903	PUSH ROLL BRACKET (RH OUTER NOT SHOWN)	1
1	400-900	PUSH ROLL BRACKET (LH OUTER SHOWN)	1
REF. NO.	PART NO.	DESCRIPTION	NO. REQ.

LAYTON MANUFACTURING COMPANY
SALEM, OREGON

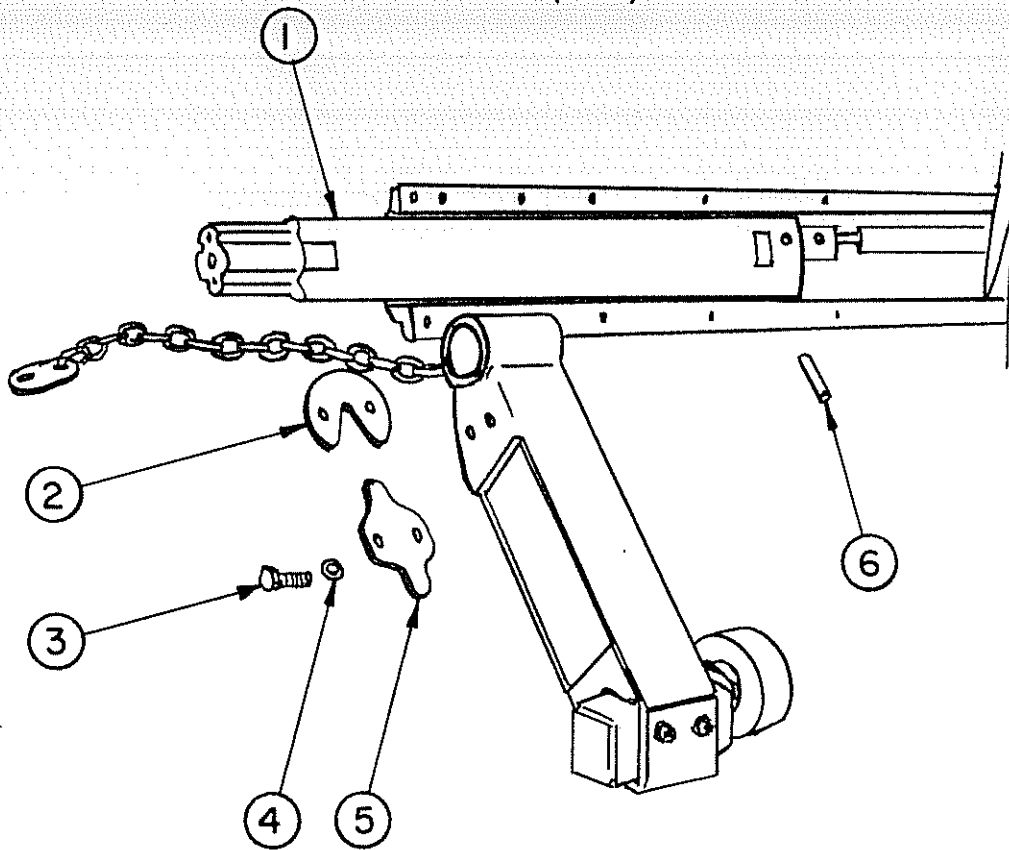
DRAWN BY: RON PHELPS
DATE: 3-26-85

TITLE: PUSH ROLL BRACKETS

DRAWING NO.:
REV. 8-85 PAGE NO. QS-1-A

SLIDE ARM (NEW STYLE)

(10-83)

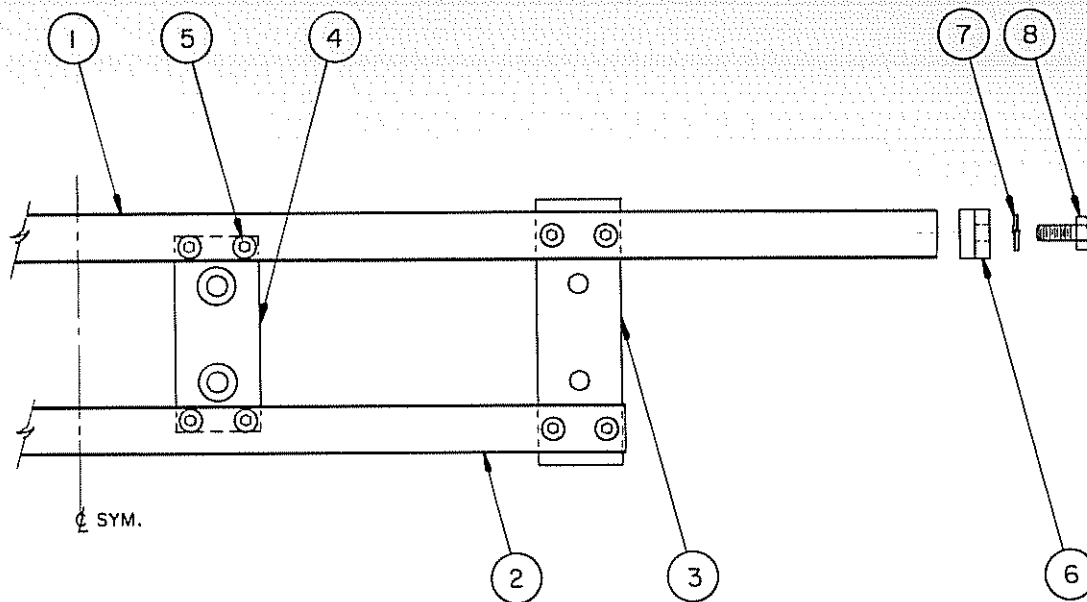


REF. #	PART NO.	DESCRIPTION	QUAN. REQ'D
1	400 889	Slide Arm	2
2	400 890	Retainer	2
3	400 286	Capscrew, Hex Hd. $\frac{5}{16}$ -11x1 $\frac{3}{4}$ Gr. 5	8
4	500 275	Lockwasher, $\frac{5}{16}$ Std. (400 113)	8
5	400 300	Stop Dog	2
6	400 891	Spiral Pin	2
7	400 892	Slide Arm Assmbly, RETRO. (includes ref. # 1, 2, 3, 4 & 6)	2

NOTE:

Ref. #1, #2, and #6 start at serial no. 400-50-1895-3. For units prior to this, see pages #1 and #2.

Ref. #7, Slide Arm Assmbly RETRO. is for 1 (either) side, and will replace parts shown on pages #1 and #2.



NOTE:

⚠ THESE PARTS START AT S/N 400-27-2017-5 (FOR ALL EXCEPT SPEC. NO. 400-50)
FOR PREVIOUS S/N, SEE PAGE 3

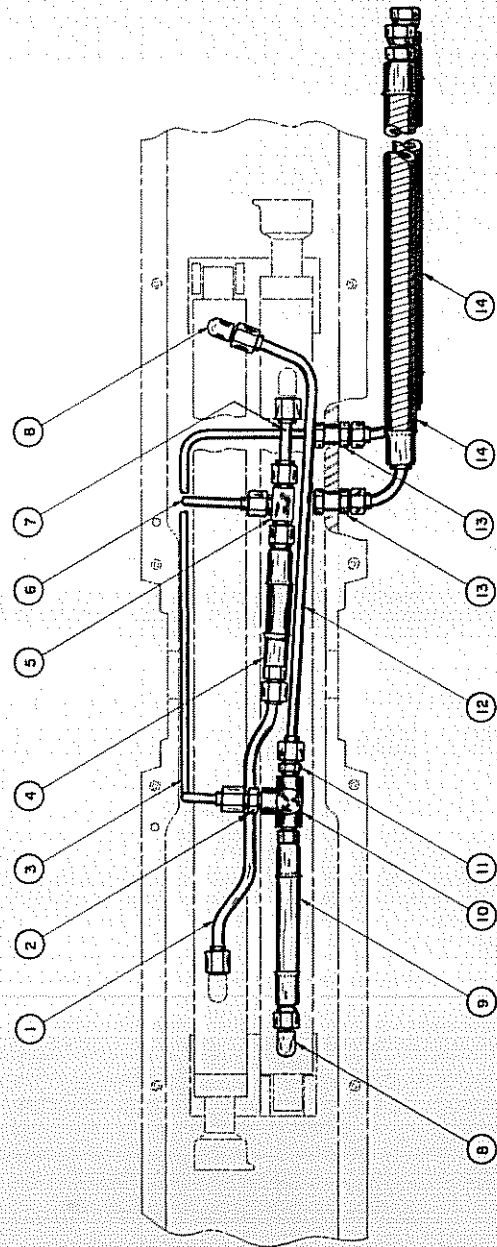
REF. NO.	PART NO.	DESCRIPTION	NO. REQ.
9	400-160	BACK BEAM ASSEMBLY (COMPLETE)	1
8	400-908	CAPSCREW, 3/4-10 NC X 1-1/2" LG. (GR. 5)	2
7	500-226	LOCKWASHER 3/4"	2
6	400-907	SUPPORT BRKT. (UPPER SLIDE RAIL)	2
5	400-172	SOCKETHEAD CAPSCREW, 5/8-18 NF X 2-1/4" LONG	16
4	400-898	MOUNTING PAD, INNER	2
3	400-897	MOUNTING PAD, OUTER	2
2	400-896	SLIDE RAIL, LOWER, 45-1/2" LONG, CHROMED	1
1	400-895	SLIDE RAIL, UPPER 75-1/2" LONG, CHROMED	1

LAYTON MANUFACTURING COMPANY
SALEM, OREGON

DRAWN BY: RON PHELPS
DATE: 3-26-85

TITLE: BACK BEAM ASSEMBLY

DRAWING NO.: REV. 8-85
PAGE NO. QS-3-A

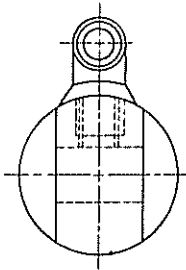


MAIN BEAM HYDRAULIC ASSEMBLY

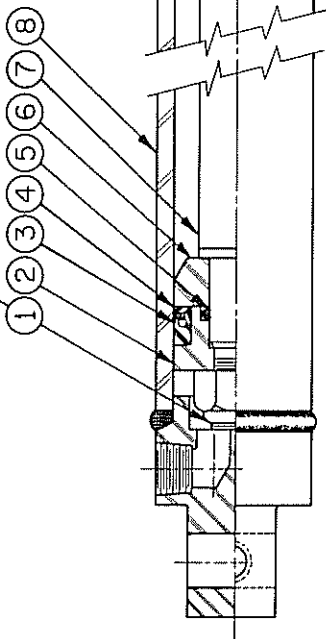
REF NO.	PART NO.	DESCRIPTION	NO DWG
1	400-109	MALE ADAPTOR	1
2	400-114	TUBE ASSEMBLY	1
3	400-109	MALE ADAPTOR	1
4	400-117	TUBE ASSEMBLY	1
5	400-117	TUBE ASSEMBLY	1
6	400-117	TUBE ASSEMBLY	1
7	400-180	TUBE ASSEMBLY	1
8	400-181	90° MALE ELBOW	2
9	400-182	HOSE ASSEMBLY	1
10	500-121	PIPE TEE	1
11	400-164	MALE ADAPTOR	1
12	400-183	TUBE ASSEMBLY	1
13	400-186	BULKHEAD UNION	2
14	400-106	HOSE ASSEMBLY	2

LAYTON MFG. CO.	
SALEM, ORE.	
REV. NO.	REV. DATE
1	8-13-48
2	
3	
4	
5	
6	
7	
8	
9	
10	
11	
12	
13	
14	
15	
16	
17	
18	
19	
20	
21	
22	
23	
24	
25	
26	
27	
28	
29	
30	
31	
32	
33	
34	
35	
36	
37	
38	
39	
40	
41	
42	
43	
44	
45	
46	
47	
48	
49	
50	
51	
52	
53	
54	
55	
56	
57	
58	
59	
60	
61	
62	
63	
64	
65	
66	
67	
68	
69	
70	
71	
72	
73	
74	
75	
76	
77	
78	
79	
80	
81	
82	
83	
84	
85	
86	
87	
88	
89	
90	
91	
92	
93	
94	
95	
96	
97	
98	
99	
100	

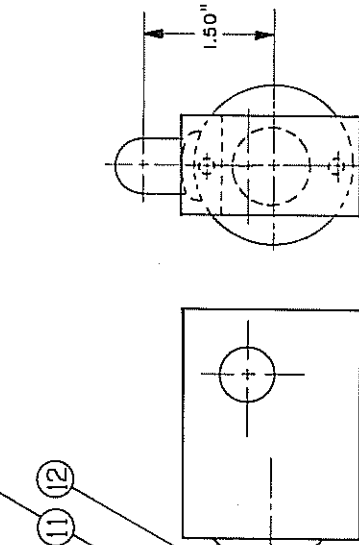
1105D7



TORQUE 50 - 60 FT. LB.



TORQUE 75 - 100 FT. LB.



NOTE:

1. SEAL SERVICE KIT: PART NO. 400-624
CONSISTS OF ITEMS MARKED (S)

2. RETROFIT KIT: PART NO. 400-754

3. END VIEWS SHOW TRUE RADIAL LOCATION OF PORTS

REF. NO.	PART NO.	DESCRIPTION	NO. REQ.	DWG. NO.
(S) 13	400 - 619	BACK-UP RING	1	
(S) 12	400 - 623	ROD WIPER RING	1	
11	400 - 755	RETAINER	1	
(S) 10	400 - 621	SEAL	1	
(S) 9	400 - 618	O-RING	1	
8	400 - 610	BARREL ASSEMBLY	1	
7	400 - 611	ROD	1	
6	400 - 764	PISTON WASHER	1	
5	400 - 763	O-RING	1	
(S) 4	400 - 762	RING NYLON	1	
(S) 3	400 - 761	SEAL	1	
2	400 - 760	PISTON	1	
1	400 - 617	NUT, HEX. 1/2-20 ESSHA PLASTIC INSERT	1	

LAYTON MANUFACTURING COMPANY
SALEM, OREGON

130515

TITLE: QUICK-HITCH SLIDE ARM

REPORT ALL
ERRORS TO
ENGINEERING
DEPARTMENT

CYLINDER ASSEMBLY

DO NOT
SCALE
DRAWINGS

REV. B-85

PRODUCT: QUICK-HITCH 400 PART NO. 400-765

DRAWN BY: *John P. Johnson*
DATE: 9-29-72

SCALE: 12" = 1' - 0"
CHECKED BY:

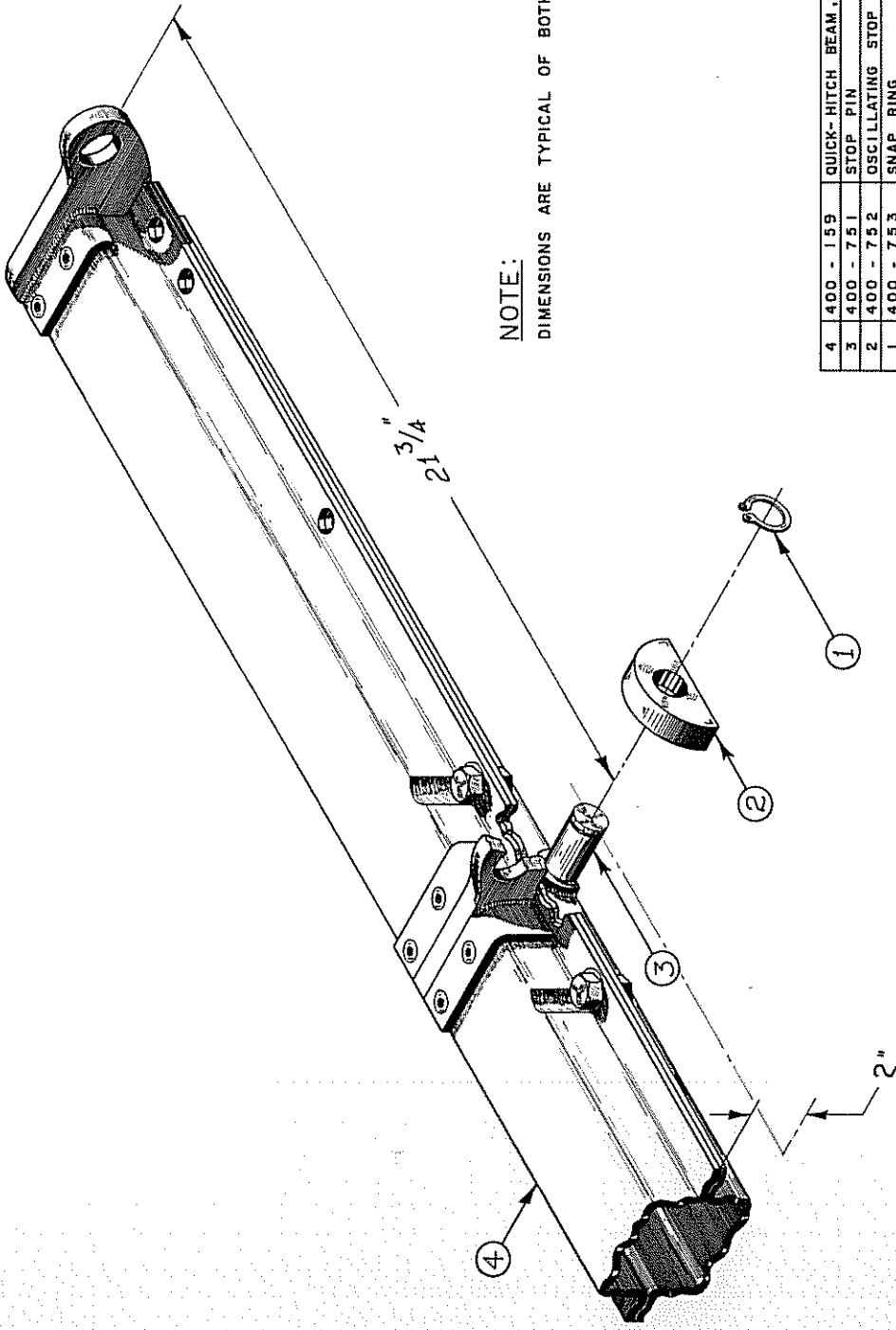
ENGINEERING APPROVED

PRODUCTION APPROVED

BILL OF MATERIAL

LAYOUT NO.

DRAWING NO. C-86



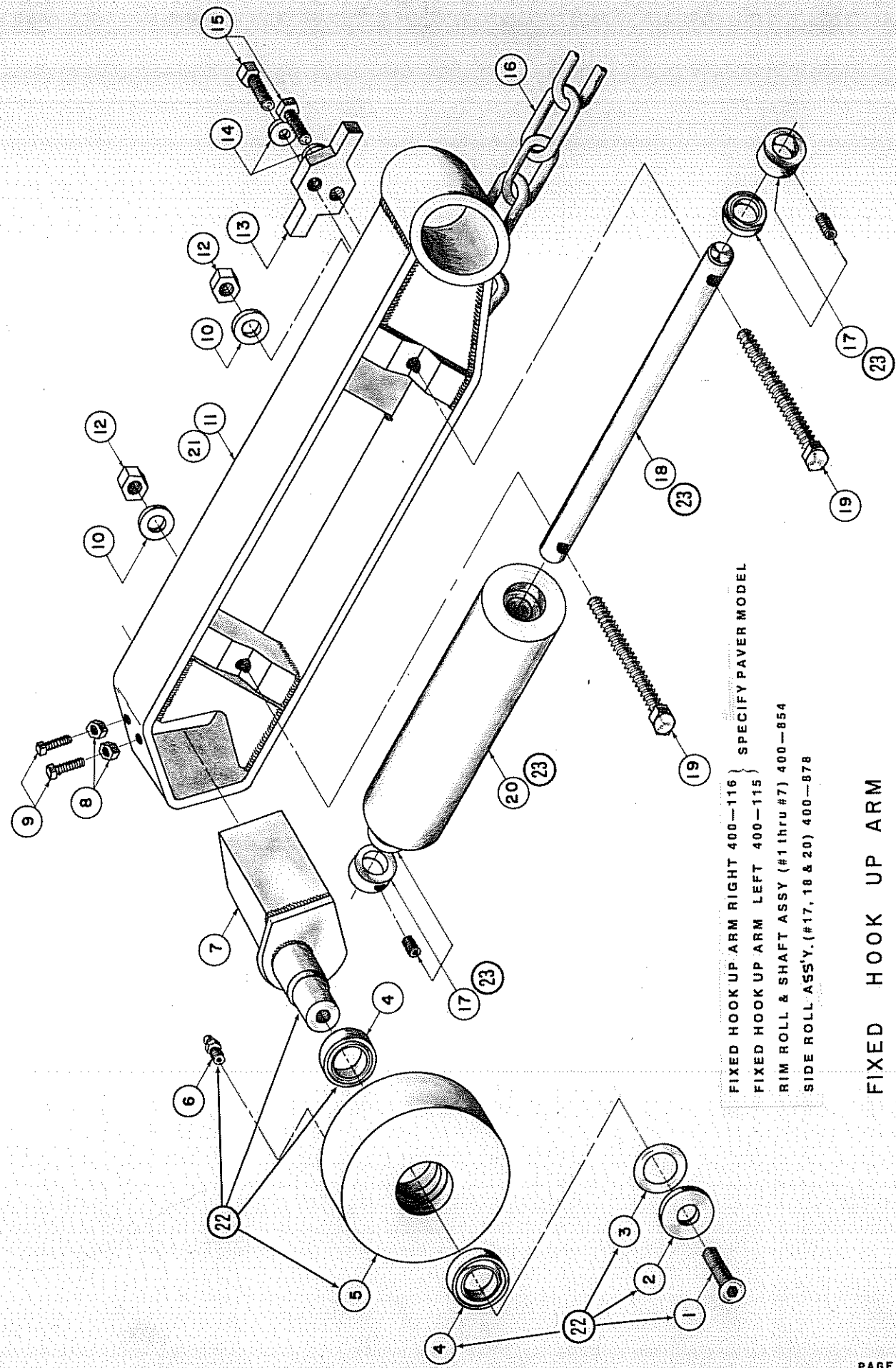
NOTE:
DIMENSIONS ARE TYPICAL OF BOTH ENDS

REF. NO.	PART NO.	DESCRIPTION	NO. REQ.	DWG. NO.
4	400 - 159	QUICK-HITCH BEAM, PAIRS ONLY	1	D-
3	400 - 751	STOP PIN	2	D-
2	400 - 752	OSCILLATING STOP	2	D-
1	400 - 753	SNAP RING	2	

LAYTON MANUFACTURING COMPANY SALEM, OREGON	
DRAWN BY: <i>Stan O'Keefe</i> DATE: 6-27-72	NO. REQ.: DWG. NO.:
TITLE: OSCILLATING STOP ASSEMBLY AND LOCATION	
PRODUCT: QUICK-HITCH 400	PART NO.:
REV. B-85	DRAWING NO.: C-83

30518
 REPORT ALL
 ERRORS TO
 ENGINEERING
 DEPARTMENT
 DO NOT
 SCALE
 DRAWINGS

140006



FIXED HOOK UP ARM RIGHT 400-116 } SPECIFY PAVER MODEL
 FIXED HOOK UP ARM LEFT 400-115 }
 RIM ROLL & SHAFT ASSY (#1 thru #7) 400-854
 SIDE ROLL ASS'Y. (#17, 18 & 20) 400-878

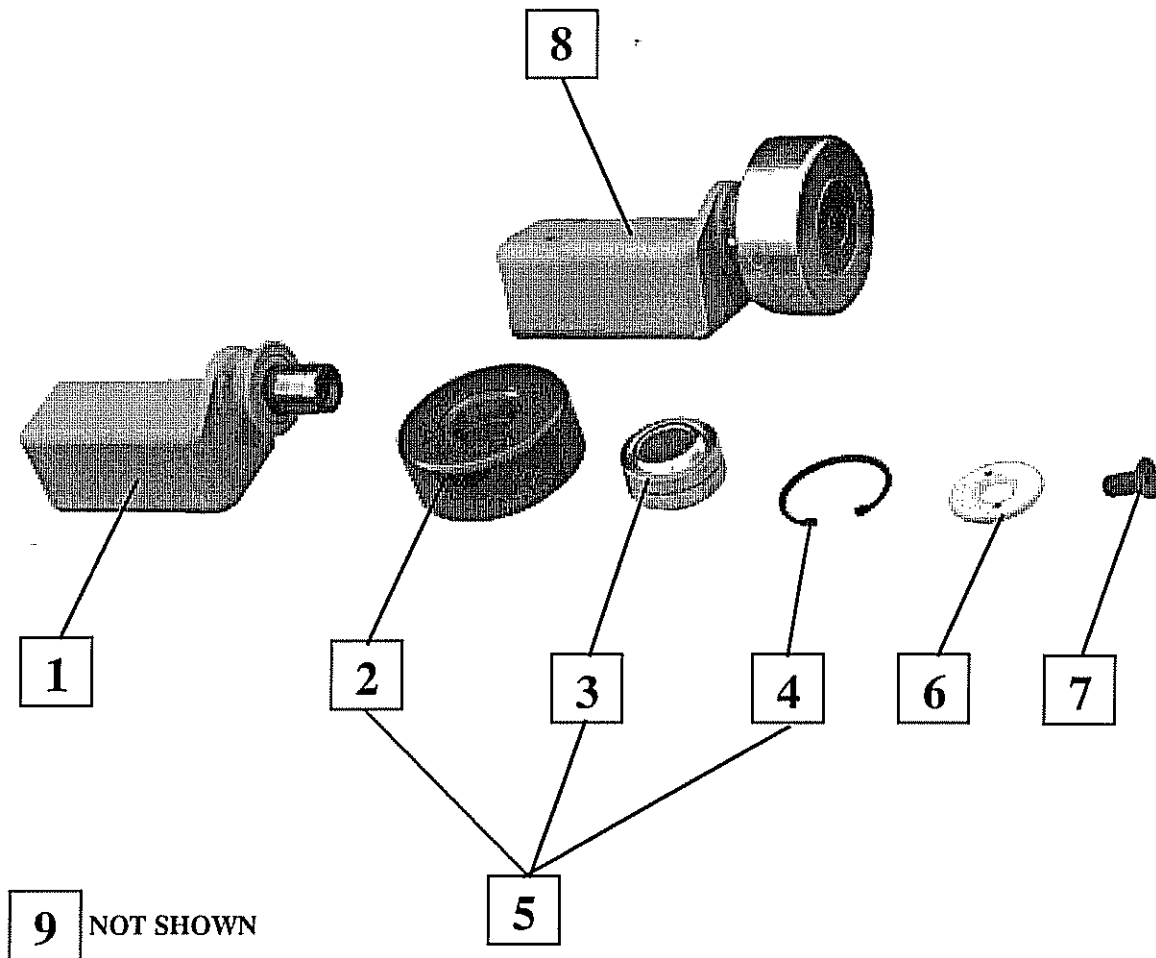
FIXED HOOK UP ARM

FOR PART NUMBERS SEE PAGE 10.

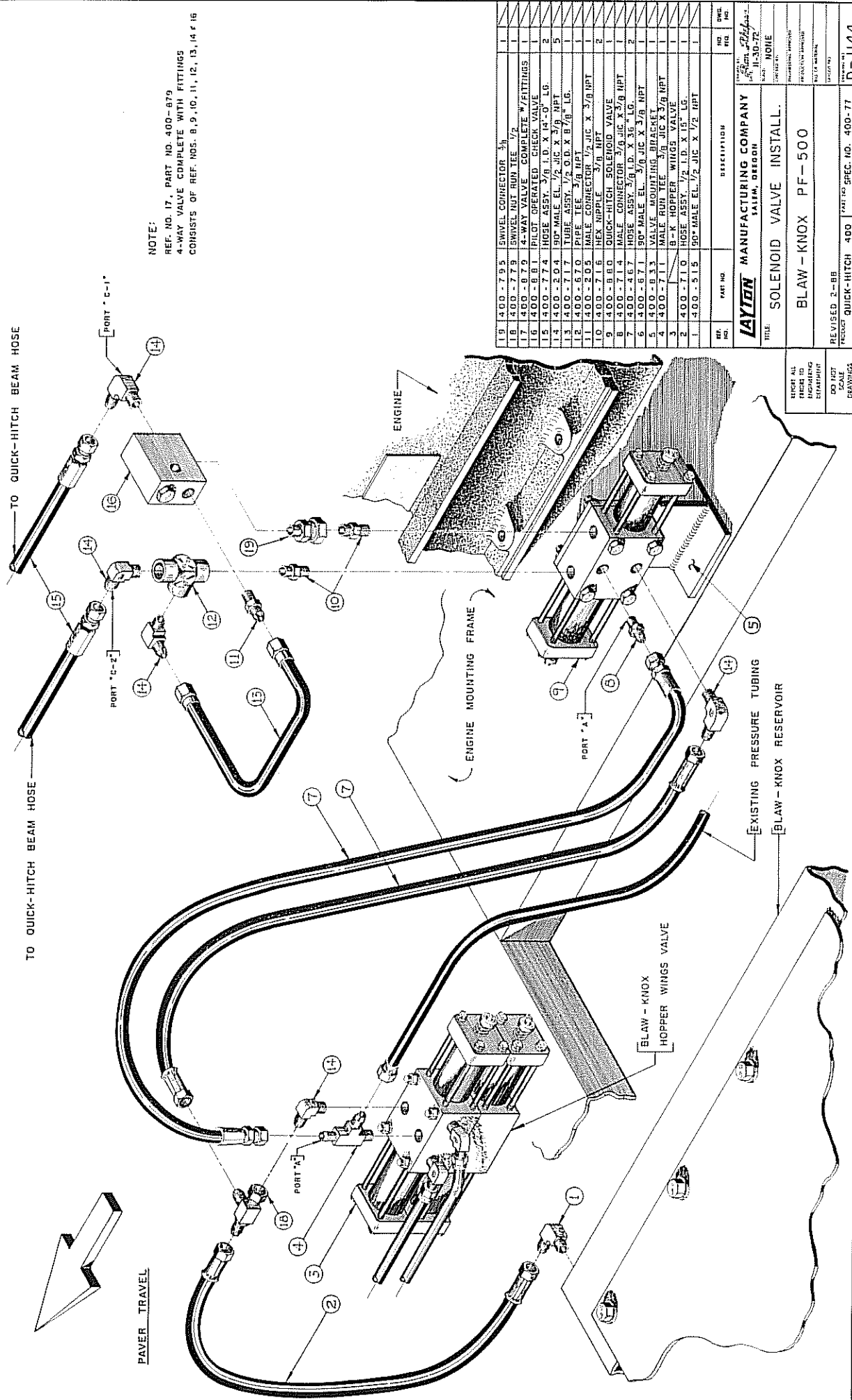
REF. NO.	PART NO.	DESCRIPTION	NO. REQ.
	400 115	HITCH ARM ASSEMBLY, LEFT (SPECIFY FINISHER MODEL)	1
	400 116	HITCH ARM ASSEMBLY, RIGHT (SPECIFY FINISHER MODEL)	1
1	500 165	CAPSCREW, 5/8-11 x 1 1/4" FLATHEAD SOCKET (400-275)	2
2	400 276	RIM ROLL WASHER	2
3	400 277	BEARING SHIM (1 1/2" O.D. x .010"), PLASTI-FLEX	2
4	400 278	RIM ROLL, BEARING	4
5	500 519	RIM ROLL(400-279)	2
6	500 176	GREASE FITTING (400-280)	2
7	400 281	ECCENTRIC SHAFT	2
8	500 589	JAM NUT, 1/2-13 HEX HEAD (400 283)	4
9	400 282	SET SCREW, 1/2-13 SQUARE HEAD	4
10	500 056	LOCKWASHER, 3/8" (400-145)	4
11	400 299	HITCH ARM FRAME, RIGHT (SPECIFY FINISHER MODEL)	1
12	500 012	NUT, 3/8"-16 HEX (400 129)	4
13	400 300	STOP DOG	2
14	500 275	LOCKWASHER 5/8" (400 113)	4
15	400 286	CAPSCREW, 5/8 - 11, HEX HEAD	4
16	400 287	CENTERING CHAIN	2
17	400 301	SIDE ROLL BEARING	4
18	400 302	SIDE ROLL SHAFT	2
19	400 303	CAPSCREW, 3/8-16 x 3 1/2", HEX HEAD	4
20	400 304	SIDE ROLL (W/O BEARINGS)	2
21	400 333	HITCH ARM FRAME, LEFT (SPECIFY FINISHER MODEL)	1
22	400 854	RIM ROLL & SHAFT ASSEMBLY (ITEMS 1 THRU 7)	2
23	400 878	SIDE ROLL & SHAFT ASSEMBLY (ITEMS #17, 18 & 20)	2

<h1>LAYTON MANUFACTURING COMPANY</h1> <p>SALEM, OREGON</p>				DRAWN BY:			
				DATE: 2/86			
HD-	CB-	DR-	PIC. NO.	HD-	CB-	DR-	SHEET NO. 65
TITLE: HITCH ARM ASSEMBLY				DRAWING NO.:			
				PAGE NO. QS - 8			

SELF ALIGNING RIM ROLL ASSEMBLY



REF. NO.	PART NO.	DESCRIPTION	QUAN.
1.	300133	EXCENTRIC SHAFT	1
2.	300136	RIM ROLL	1
3.	300137	BALL BUSHING, SELF ALIGNING	1
4.	300138	SNAP RING	1
5.	300134	RIM ROLL & BEARING ASSY (INCLUDES # 2,3,&4)	1
6.	300132	RETAINER WASHER	1
7.	500165	CAPSCREW 5/8-11 X 1-1/4" FLATHEAD SOCKET	1
8.	300131	RIM ROLL & SHAFT ASSY (INCLUDES # 1,5,6,&7)	1
9.	500176	GREASE FITTING (NOT SHOWN)	1



NOTE:
 REF. NO. 17, PART NO. 400-879
 4-WAY VALVE COMPLETE WITH FITTINGS
 CONSISTS OF REF. NOS. 8, 9, 10, 11, 12, 13, 14 & 16

REF. NO.	PART NO.	DESCRIPTION	QTY.
19	400-795	SWIVEL CONNECTOR 3/8"	1
18	400-779	SWIVEL NUT RHM TEE 1/2"	1
17	400-879	4-WAY VALVE COMPLETE W/FITTINGS	1
16	400-881	PILOT OPERATED CHECK VALVE	1
15	400-774	HOSE ASSY. 3/8 I.D. X 14'-0" LG.	2
14	400-204	90° MALE EL. 1/2 JIC X 3/8 NPT	5
13	400-717	TUBE ASSY. 1/2 O.D. X 8 1/8" LG.	1
12	400-670	PIPE TEE 3/8 NPT	1
11	400-205	MALE CONNECTOR 1/2 JIC X 3/8 NPT	1
10	400-716	HEX NIPPLE 3/8 NPT	2
9	400-860	QUICK-HITCH SOLENOID VALVE	1
8	400-714	MALE CONNECTOR 3/8 JIC X 3/8 NPT	1
7	400-467	HOSE ASSY. 3/8 I.D. X 3' LG.	2
6	400-671	90° MALE EL. 1/2 JIC X 3/8 NPT	1
5	400-733	VALVE MOUNTING BRACKET 1/2 NPT	1
4	400-711	B-K HOPPER WINGS VALVE	1
3	400-710	HOSE ASSY. 1/2 I.D. X 15' LG.	1
2	400-515	90° MALE EL. 1/2 JIC X 1/2 NPT	1

LAYTON MANUFACTURING COMPANY
 SALIM, OREGON

TITLE: SOLENOID VALVE INSTALL.
 BLAW - KNOX PF - 500

REVISED 2-68
 PRODUCT QUICK-HITCH 400

PART NO. SPEC. NO. 400-77

DATE 11-30-72
 NOISE

REVISIONS

NO. 1144

NOTE: ALL DIMENSIONS TO FACE UNLESS OTHERWISE SPECIFIED.
 DIMENSIONS TO CENTERLINE UNLESS OTHERWISE SPECIFIED.
 DIMENSIONS TO SURFACE UNLESS OTHERWISE SPECIFIED.