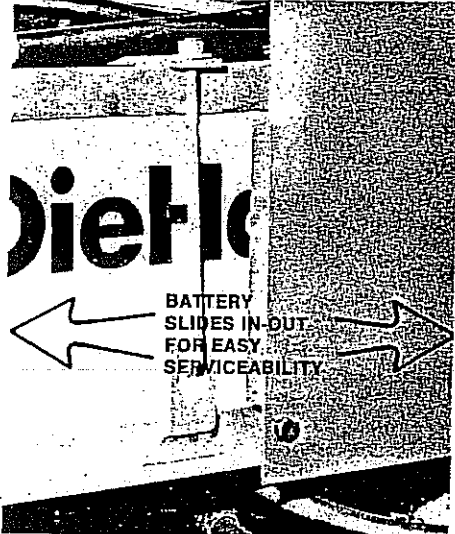


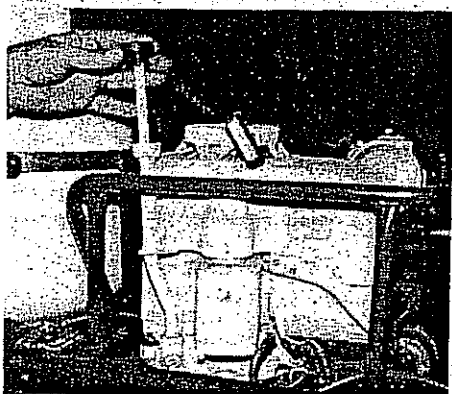
PRE-START

Do not start engines until you have read completely and understand the operating instructions.

1. **Battery.** Located on a sliding tray in the right side power unit is a 12-volt battery. Check the fluid level in the battery cells. If low, fill with clean distilled water. Do not overfill. The electrical system is a negative ground system. Check the battery terminals to insure the negative terminal is closest to the power unit door and the positive terminal is covered with a plastic protector.

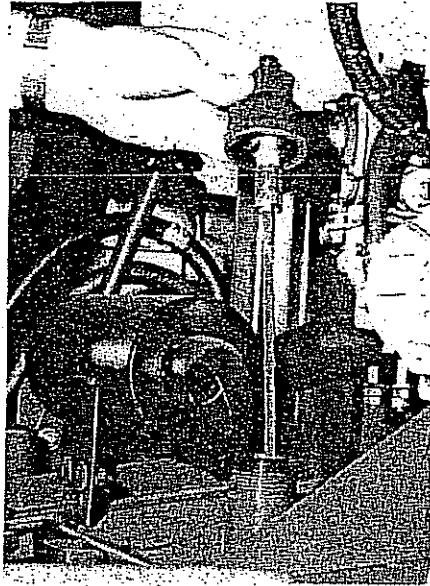


2.) **Engine Oil.** On the side of the engine toward the rear of the paver is an engine oil fill tube with a dip stick attached to the cap. Remove the cap and check the engine oil level. If low replenish with one of the following: Chevron H.D.A.X. Oil 30, Mobil Pegasus 30, Texaco URSA Oil, extra duty, Valvoline AD-1. If the above oils are not available, use an L.P. gas engine oil or a mild detergent type oil.



CHECK ENGINE OIL

3. **Hydraulic Oil.** There is a hydraulic reservoir in each power unit. Remove the reservoir fill cap and check the oil level on the dip stick. Add oil if necessary. Use International Harvester Hy-Tran hydraulic fluid or other comparable brands such as Mobil 300 or Chevron Tractor Hydraulic Fluid. Do not mix different brands of hydraulic fluid.

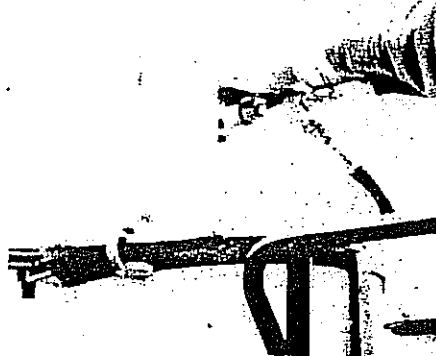


CHECK HYDRAULIC OIL

4. **Propane Bottles.** Check the propane bottles to insure they are full. The propane bottles come from the factory filled with compressed air.

STARTING PROCEDURES

1. Turn on propane valve on top of tank.
NOTE: Engine uses propane vapor direct from the top of the tank after passing through a filter and regulator to reduce pressure.



TURN ON PROPANE VALVE ON TOP OF TANK

2.) Located on the top of the propane adapter at the air inlet to the carburetor is a knurled valve handle which is part of the propane mixture adjustment. The handle can be pulled up and rotated 90 degrees this will allow an additional amount of propane into the engine during cold morning starting. When the engine warms up, the valve can be rotated to its original setting.



PUSH PROPANE PRIME BUTTON

3.) There is a primer button located on the side of the propane regulator. This should be pressed 2 or 3 times before starting engine. This will also add additional propane for starting.

4. Put the throttle lever in $\frac{1}{2}$ open position. All functions of the paver except the augers can operate with the engines on a high idle. (When twisting the motorcycle grip to activate the augers, a solenoid lever activates the throttle to a high RPM.)

5. Turn key and start engine. (Each engine has to be started separately.)



TURN KEY TO START ENGINE, THROTTLE $\frac{1}{2}$ OPEN