

F. OPTIONAL EQUIPMENT

The heater assembly consists of two heat exchangers, two burners, butane tank, regulator and necessary fittings and hoses for operation.

To operate:

1. Rotate burners as shown in Figure F-1. This is to prevent butane from entering the heat exchangers and causing a flash back.
2. Open regulator valve and set pressure at 30 pounds.
3. Open burner valve and ignite burners individually.
4. Rotate burners—over heat exchangers. (See Figure F-3)

Fig. F-1

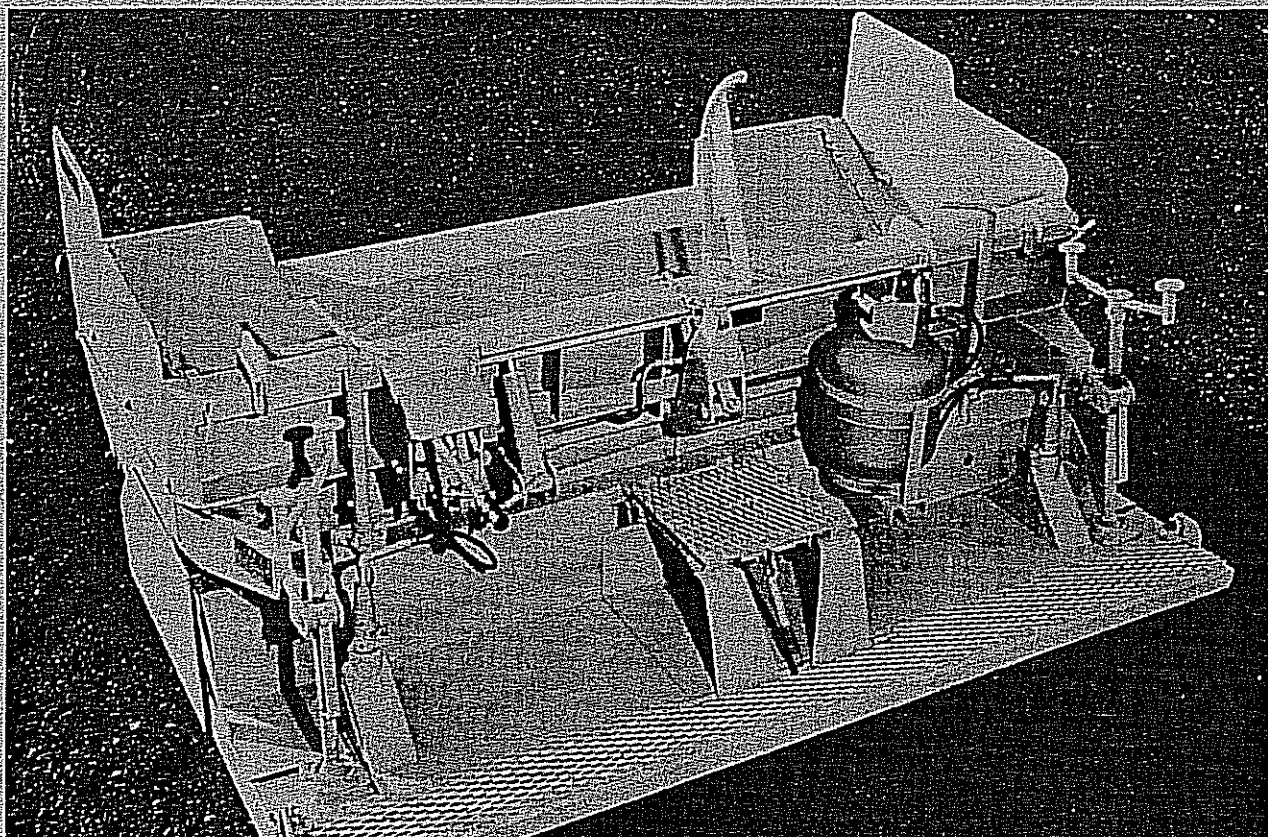


Fig. F-2

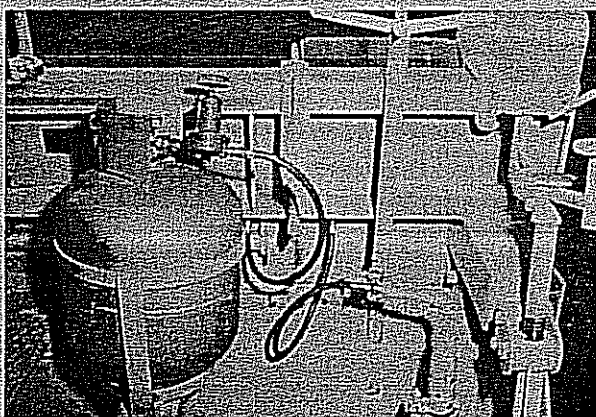


Fig. F-3

The screed will heat in four to six minutes and the screed heaters may be left on continuously without damaging or warping the screed wear plate. For most purposes, if the screed heaters are to remain on throughout the job, adjust the pressure regulator to 20 pounds. This will keep the screed hot and will result in less fuel consumption.

Ditch Plates

Detailed instructions for installation are with the ditch plate kit. As indicated, these are installed without modification to the paver and by using a combination of plates, width from 0-7 feet can be spread while stopped or in motion.

The lateral adjustment is controlled by the extensions enabling the operator to move the entire paving area from side to side. This allows alignment to the area being paved in the event the truck driver does not hold a true course. Also, since a ditch is seldom constant in width due to cave-ins, etc., on the move adjustment of 2 feet on each side of the paving area will enable the operator to infinitely control spread.

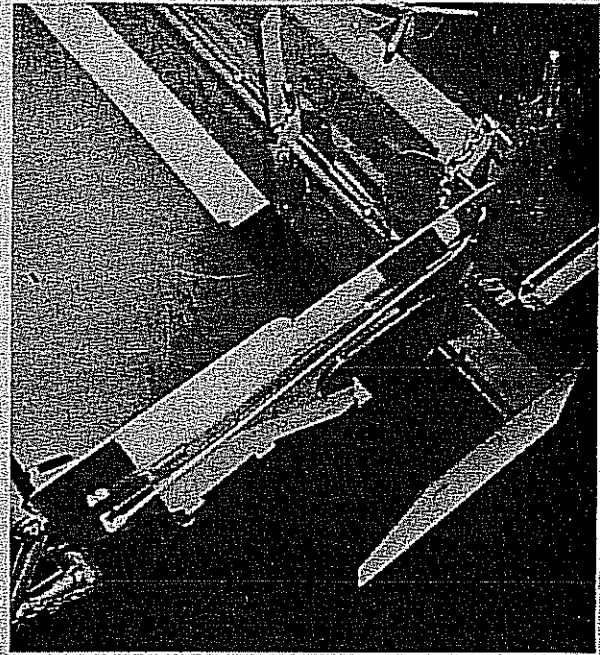


Fig. F-5

Shoulders are usually paved through one side of the machine using one ditch plate only. (See figure F-5)

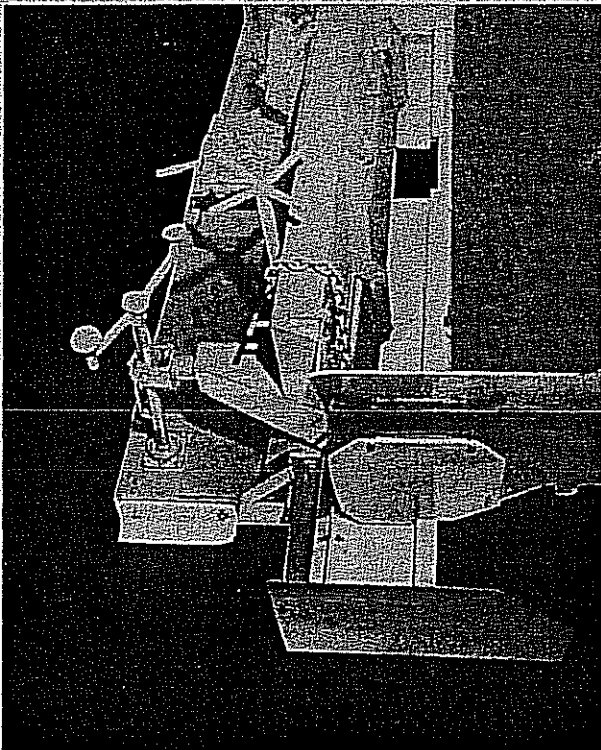


Fig. F-4

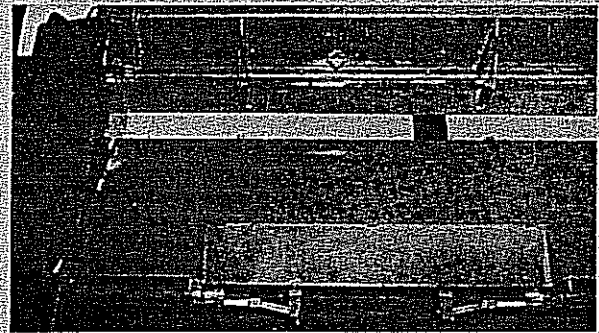


Fig. F-6



Fig. F-7

LAYTON TRACK PAVER