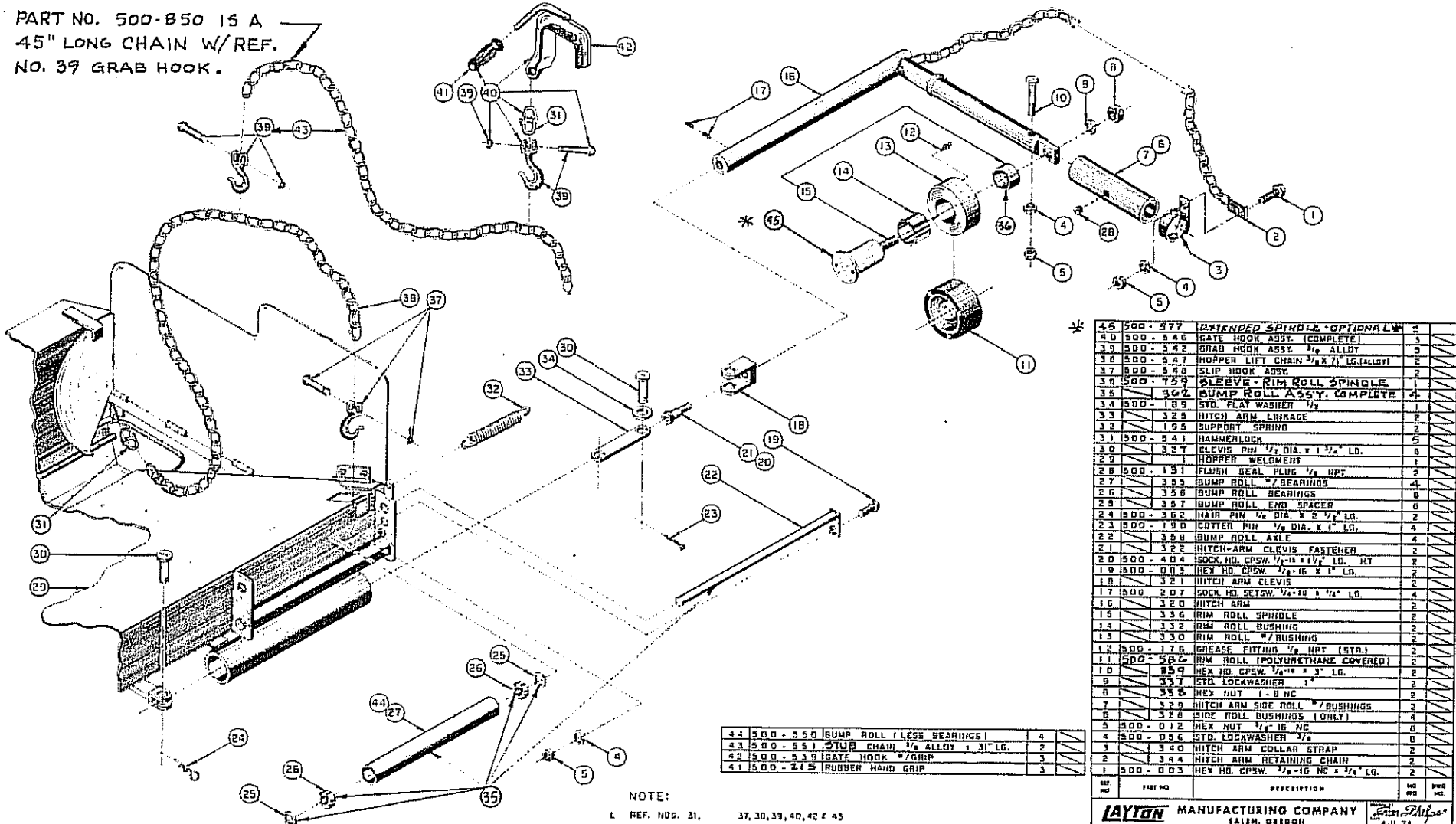


PART NO. 500-B50 IS A
45" LONG CHAIN W/REF.
NO. 39 GRAB HOOK.



QTY	PART NO.	DESCRIPTION	NO. OF	REV.
2	45 500-577	EXTENDED SPINDLE - OPTIONAL	2	
3	40 500-346	RATE HOOK ASSY. (COMPLETE)	3	
3	39 500-342	GRAB HOOK ASSY. 1/2" ALLOY	3	
2	17 500-327	HOPPER LIFT CHAIN 1/2" X 71" LG. (ALLOY)	2	
2	37 500-350	SLIP HOOK ASSY.	2	
1	36 500-759	SLEEVE - RIM ROLL SPINDLE	1	
4	35 342	BUMP ROLL ASSY. COMPLETE	4	
1	34 500-189	STD. FLAT WASHER 1/2"	1	
2	33 325	HITCH ARM LINKAGE	2	
2	32 195	SUPPORT SPRING	2	
5	31 500-541	HAMMERLOCK	5	
6	30 327	CLEVIS PIN 1/2" DIA. X 1 1/2" LG.	6	
1	29 327	HOPPER WELDMENT	1	
2	28 500-131	FLUSH SEAL PLUG 1/2" NPT	2	
4	27 333	BUMP ROLL #7 BEARINGS	4	
8	26 326	BUMP ROLL BEARINGS	8	
2	25 327	BUMP ROLL END SPACER	2	
2	24 500-362	HAIR PIN 1/2" DIA. X 2 1/2" LG.	2	
4	23 500-190	COTTER PIN 1/2" DIA. X 1" LG.	4	
4	22 358	BUMP ROLL AXLE	4	
2	21 322	HITCH-ARM CLEVIS FASTENER	2	
2	20 500-404	SOCK. HD. CPWSW. 1/2"-11 X 1 1/2" LG. HT	2	
2	19 500-003	HEX HD. CPWSW. 3/8"-16 X 1" LG.	2	
2	18 321	HITCH ARM CLEVIS	2	
4	17 500-207	SOCK. HD. SETSW. 1/2"-20 X 1 1/2" LG.	4	
2	16 320	HITCH ARM	2	
2	15 336	RIM ROLL SPINDLE	2	
2	14 332	RIM ROLL BUSHING	2	
2	13 330	RIM ROLL #7 BUSHING	2	
2	12 500-176	GREASE FITTING 1/2" NPT (STR.)	2	
2	11 500-586	RIM ROLL (POLYURETHANE COVERED)	2	
2	10 259	HEX HD. CPWSW. 1/2"-16 X 3" LG.	2	
2	9 357	STD. LOCKWASHER 1"	2	
2	8 355	HEX NUT 1.0 NC	2	
2	7 329	HITCH ARM SIDE ROLL #7 BUSHINGS	2	
4	6 328	SIDE ROLL BUSHINGS (ONLY)	4	
8	5 500-012	HEX NUT 1/2" X 16 NC	8	
8	4 500-056	STD. LOCKWASHER 1/2"	8	
3	3 340	HITCH ARM COLLAR STRAP	3	
2	2 344	HITCH ARM RETAINING CHAIN	2	
2	1 500-003	HEX HD. CPWSW. 3/8"-16 NC X 1 1/2" LG.	2	

4	44 500-550	BUMP ROLL (LESS BEARINGS)	4
2	43 500-551	SLIP CHAIN 1/2" ALLOY X 31" LG.	2
3	42 500-539	GATE HOOK #7 GRIP	3
3	41 500-215	RUBBER HAND GRIP	3

NOTE:

- REF. NOS. 31, 37, 30, 39, 40, 42 & 43 SERIAL NO. H-6404-B-3 AND UP.
- REF. NO 20, PART NO 500-404 IS ON PAVERS STARTING AT S_N 5410-B-2
- REF. NO 11, PART NO 500-586 IS AVAILABLE FOR USE WITH CHROME TRUCK RIMS.
- THE HITCH-ARM ASSEMBLY COMPLETE, PART NOS 345-R AND 345-L INCLUDE REF. NOS. 1 THRU 5, 7, 8, 9, 10, 12, 13, 14, 15, 16, 17, 18, 20, 23, 24, 30, 33, AND 34.

140160

NO. OF
SHEET
DRAWINGS

LAYTON MANUFACTURING COMPANY
SALIM, GEORGIA

11111 PAVER HITCH ARM ASSEMBLY

REV. 1-85

PAVER H-500-B PART NO. 500-B50